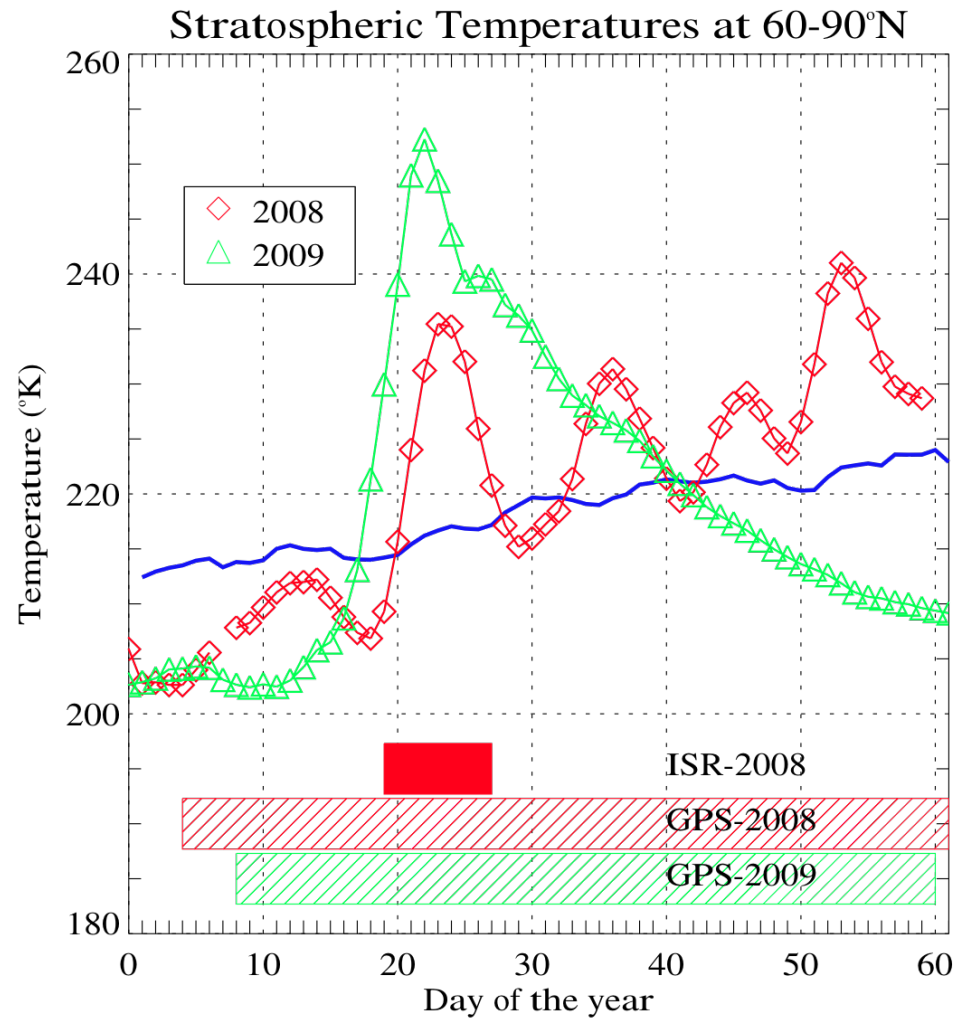


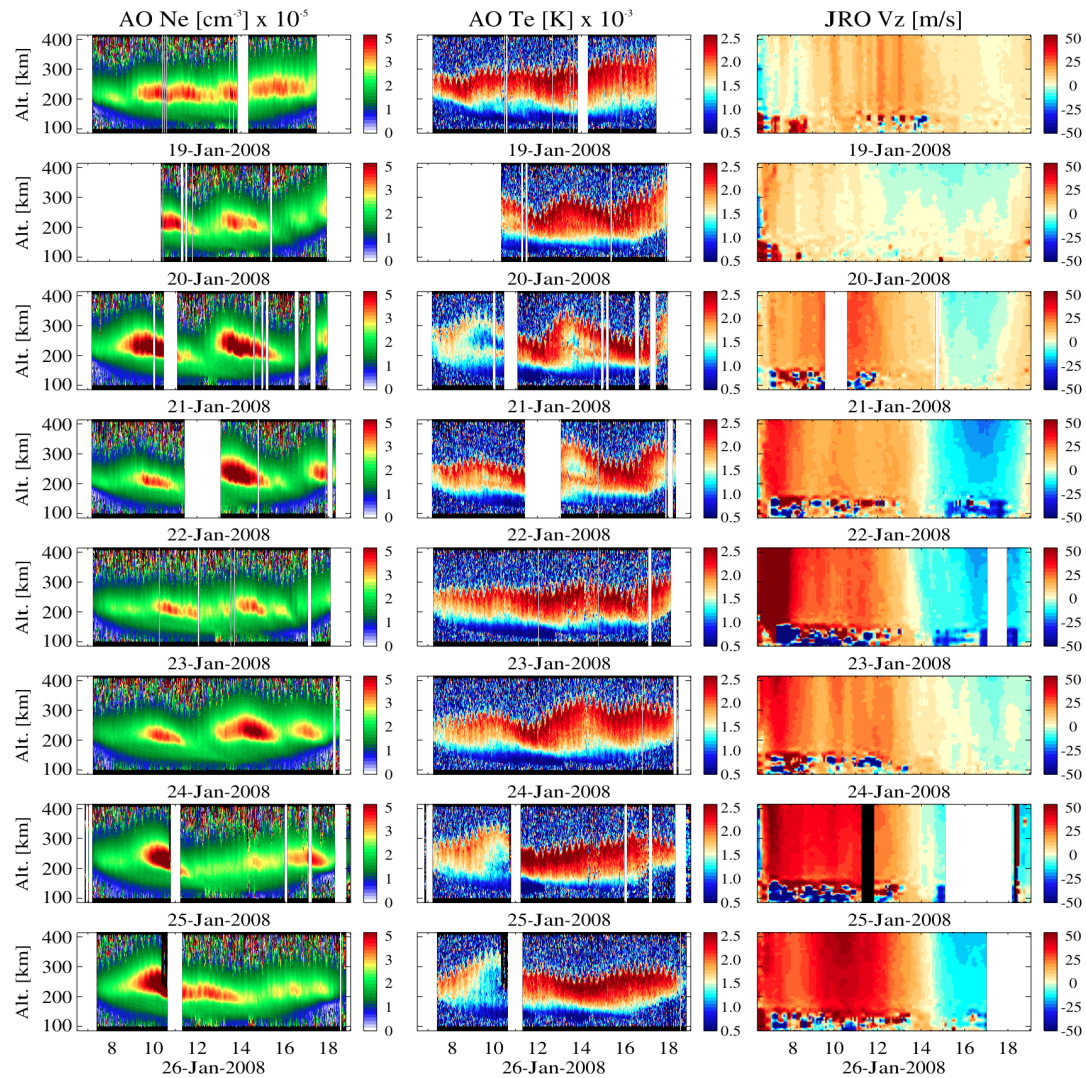
Quiet time variability over Arecibo and Jicamarca during SSWs

J. L. Chau, N. A. Aponte,
E. Cabassa, M. P. Sulzer,
L. P. Goncharenko, and
S. A. González

SSW Events: 2008, 2009

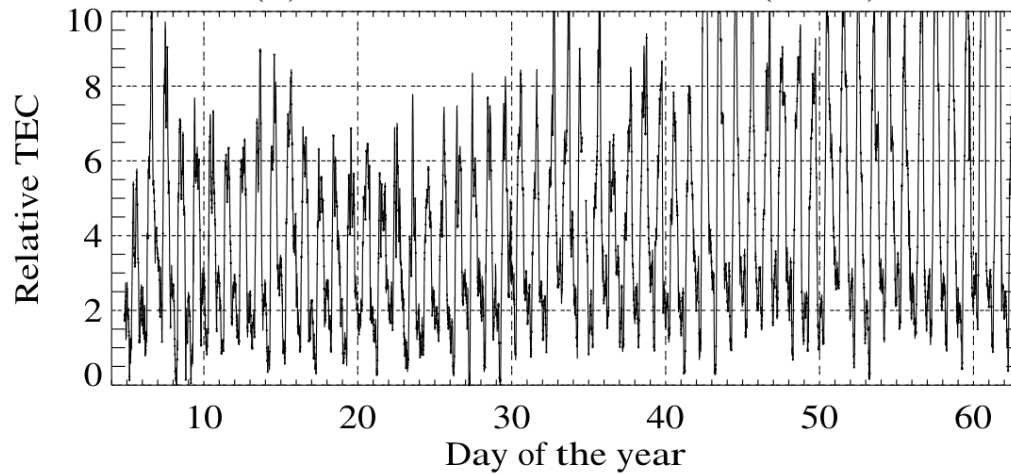


ISR Parameters: Arecibo-Jicamarca

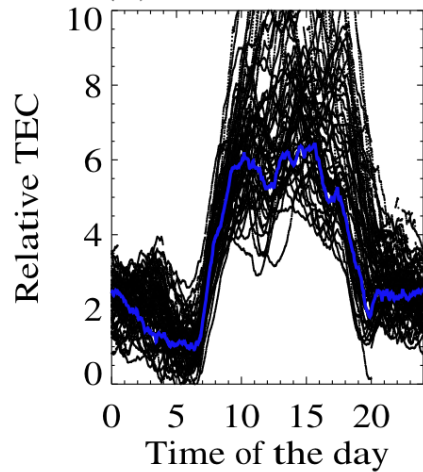


Arecibo GPS TEC

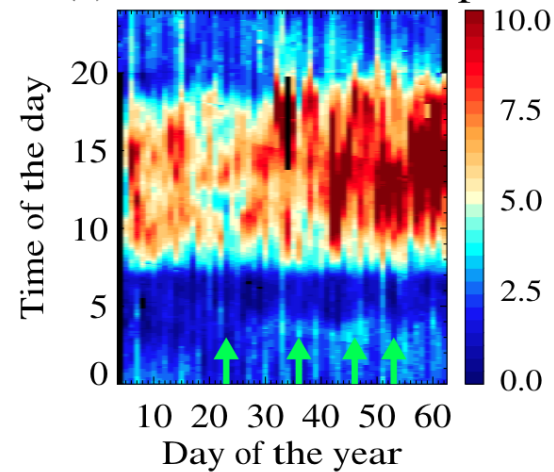
(a) GPSTEC over Arecibo (2008)



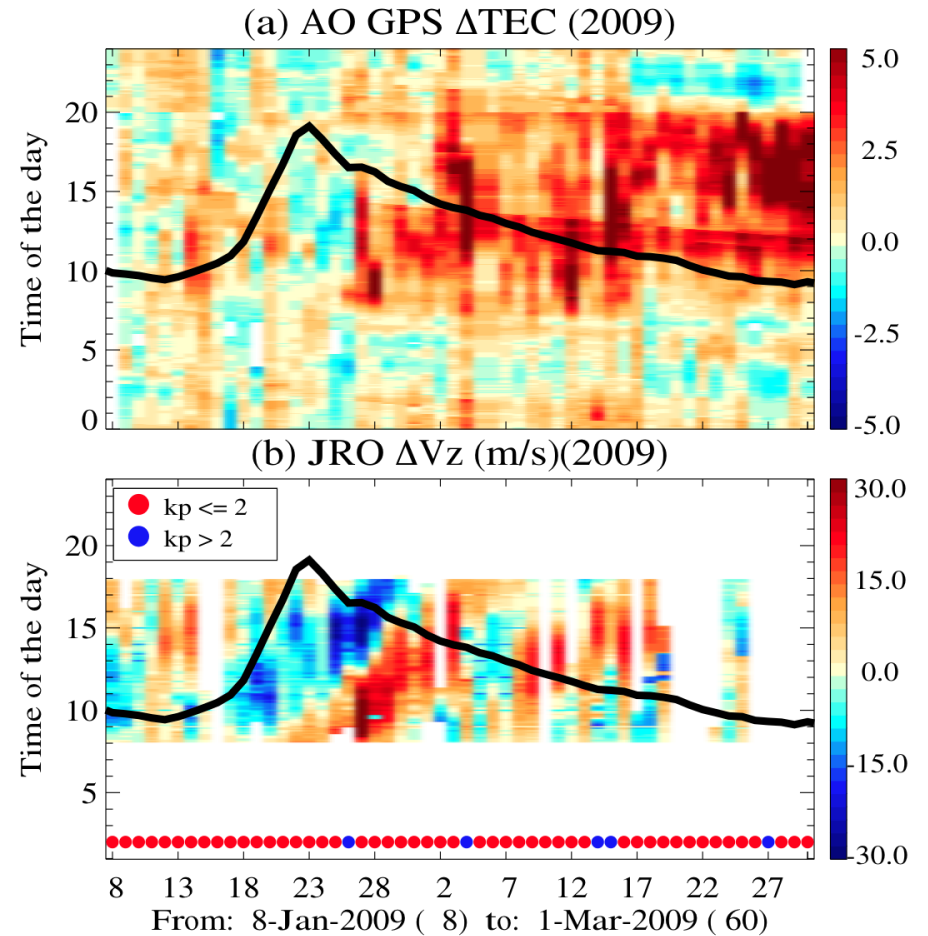
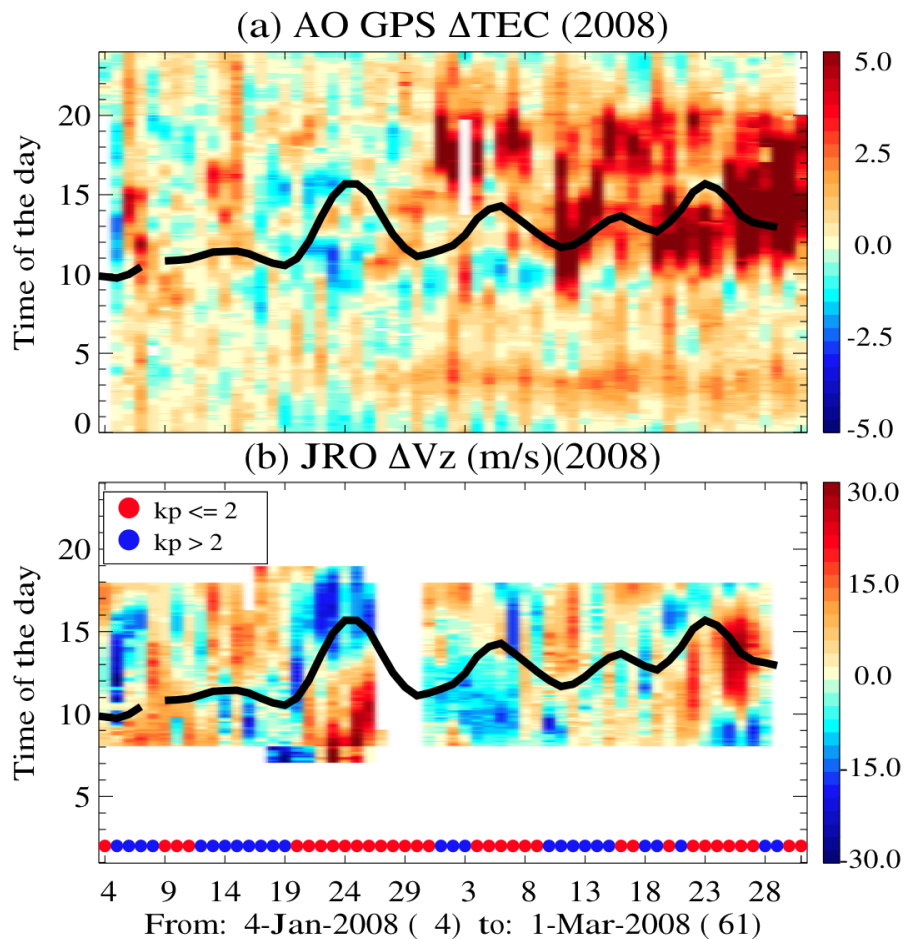
(b) Diurnal TEC



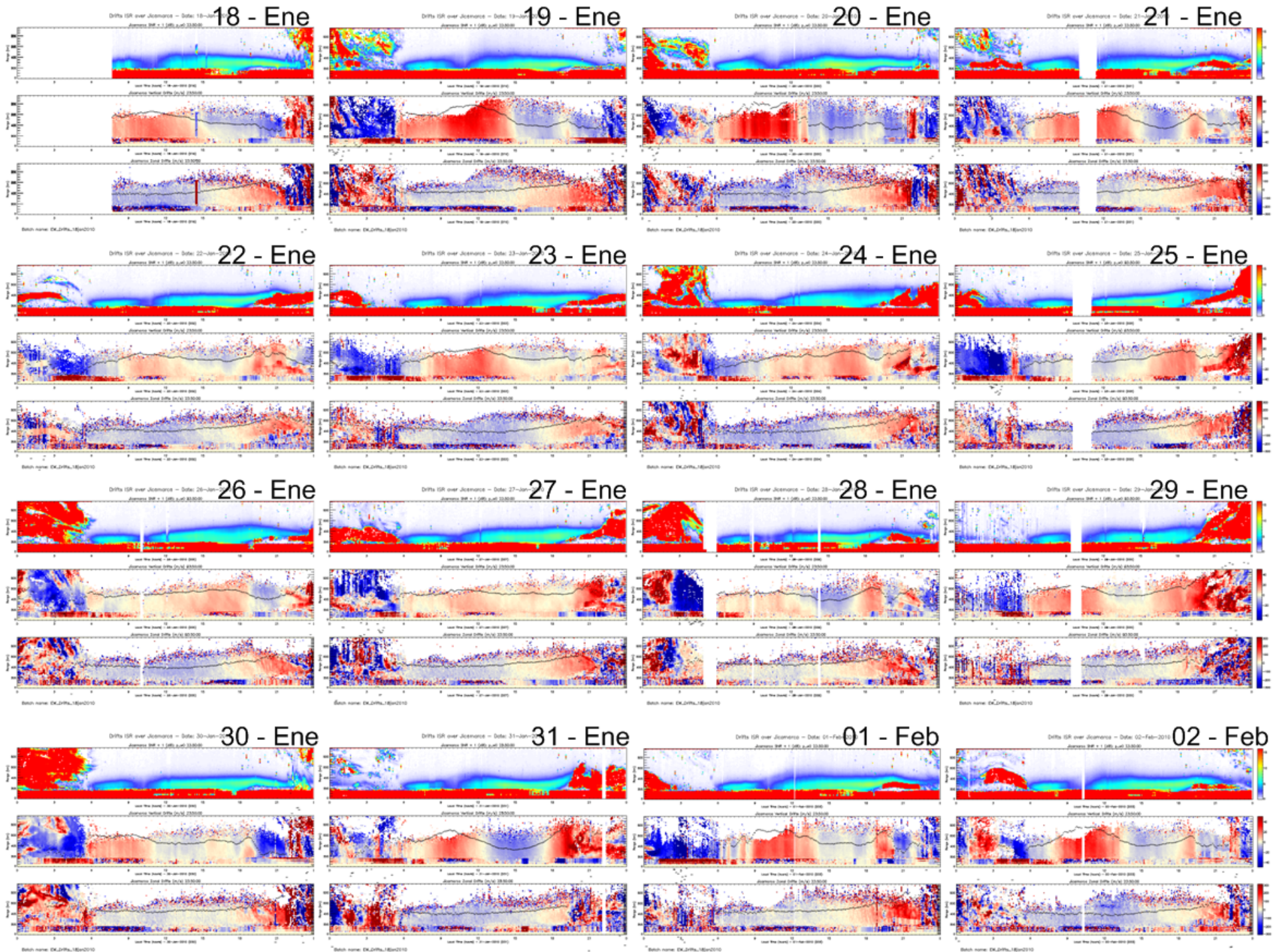
(c) Relative TEC maps



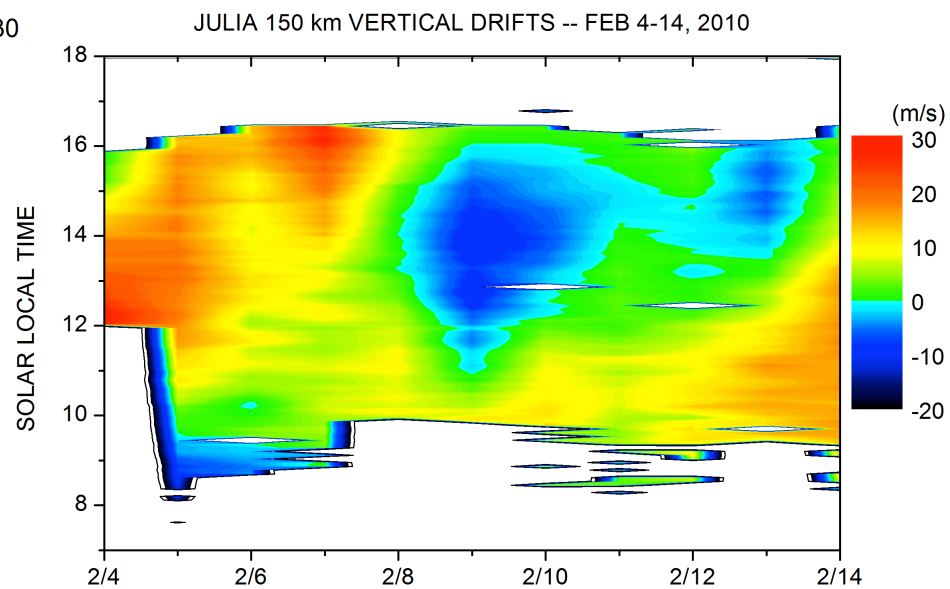
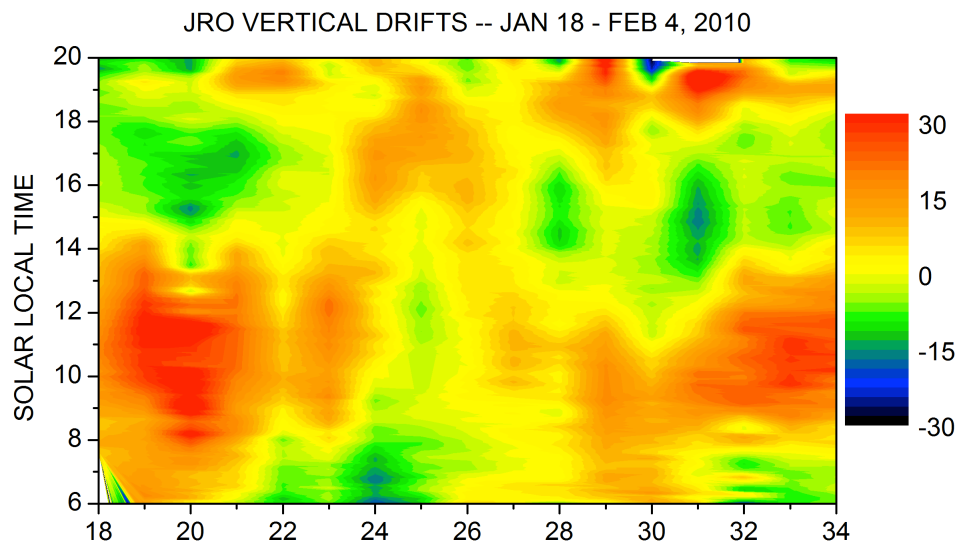
AO Δ TEC - JRO Δ Vz - SSW T



[Chau et al., 2010]



JRO ExB Drifts: Jan-Feb 2010



[Courtesy: M. Olson and B. Fejer]